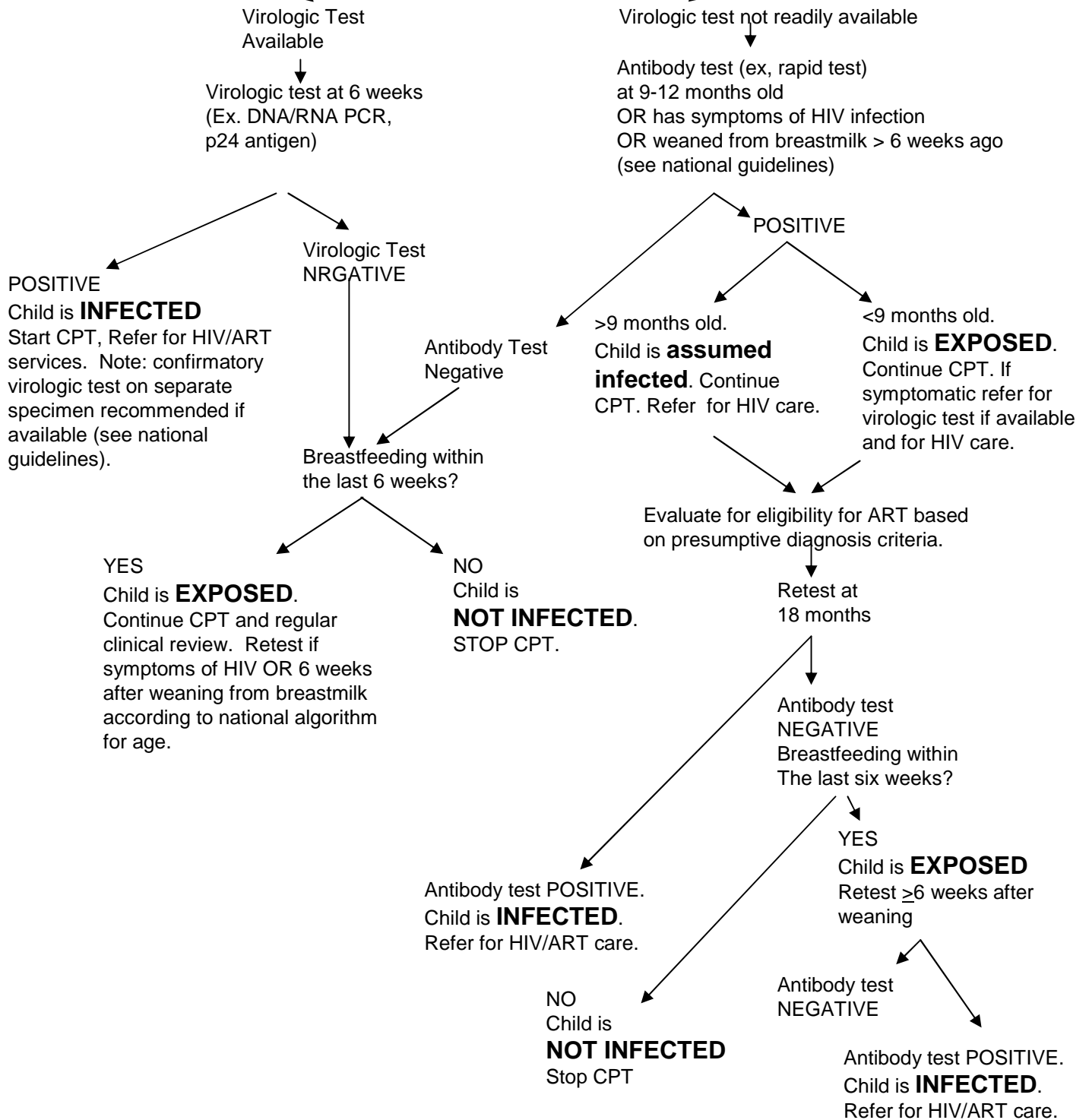
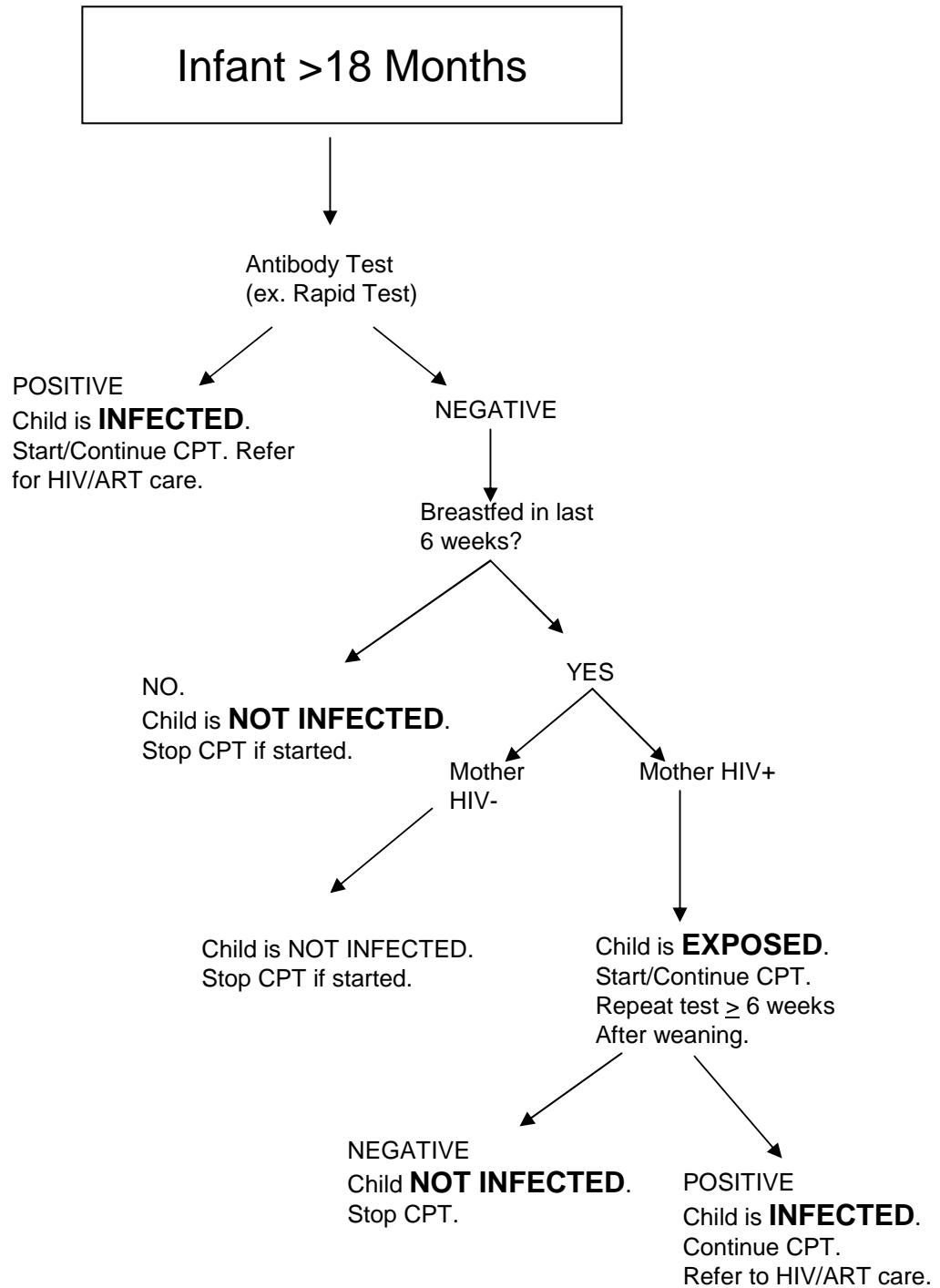


# Infant <18 months Mother HIV+

Infant is **EXPOSED**.  
Start CPT from 6 weeks of age

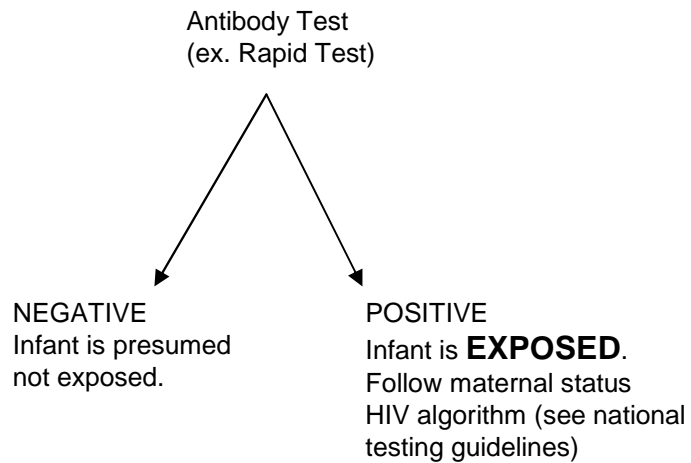


\*\*Antibody testing may be done at any age in an infant with symptoms of HIV infection. An infant with symptoms of infection should be referred for virologic testing if available and for HIV care and evaluation of eligibility for ART based on presumptive infection criteria.



Note: Algorithms are based on general recommendations from “Antiretroviral Therapy for HIV Infection in Infants and Children: Towards Universal Access,” WHO, 2007, GENEVA. Please refer to national testing guidelines for specific guidelines.

## Infant <18 Months Maternal HIV Status UNKNOWN



Note: Algorithms are based on general recommendations from “Antiretroviral Therapy for HIV Infection in Infants and Children: Towards Universal Access,” WHO, 2007, GENEVA. Please refer to national testing guidelines for specific guidelines.